

STR Authentication Report For Cell Line

1. Cell Name: M03.13

2. Test Method: DNA was extracted using the genome extraction kit (Axygen), amplified using a 21- STR amplification protocol, the STR loci and gender gene Amelogenin were detected on the ABI 3730XL Genetic Analyzer.

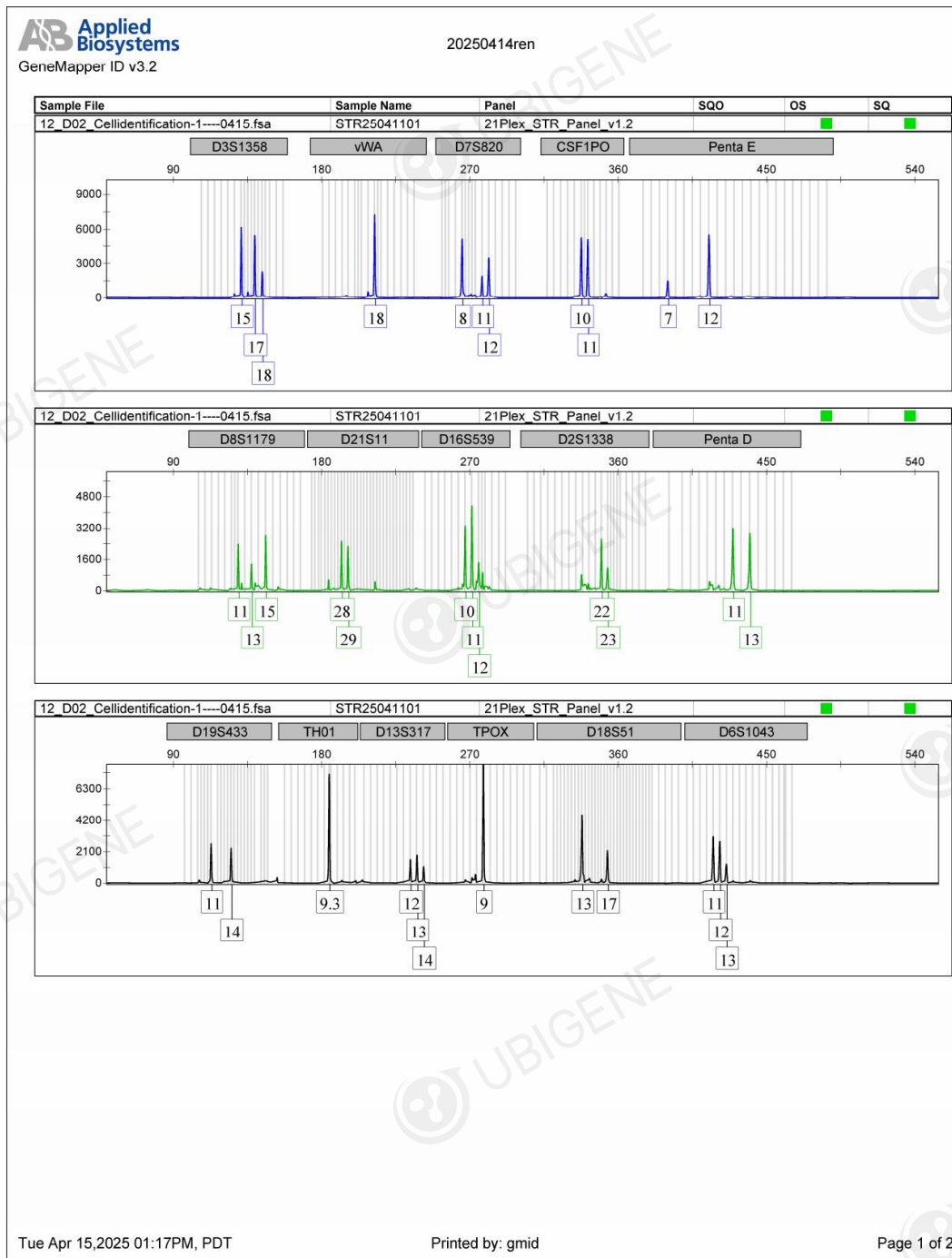
3. Sample gene genotype analysis result:

Genotype analysis results of STR and Amelogenin loci in cells						
STR Loci	STR profile for Sample cell			STR profile for Cell Bank cell		
	Cell name: STR25041101			Cell name: MO3.13		
	Allele1	Allele2	Allele3	Allele1	Allele2	Allele3
D5S818	10	11	12.0	10	11	12.0
D13S317	12	13	14.0	12	13	
D7S820	8	11	12.0	8	11	12.0
D16S539	10	11	12.0	10	11	12.0
VWA	18	18		18	18	
TH01	9.3	9.3		9.3	9.3	
AMEL	X	X		X	X	
TPOX	9	9		9	9	
CSF1PO	10	11		10	11	14.0
D12S391	20	20				
FGA	20	21				
D2S1338	22	23				
D21S11	28	29				
D18S51	13	17				
D8S1179	11	13	15.0			
D3S1358	15	17	18.0			
D6S1043	11	12	13.0			

PENTAE	7	12				
D19S433	11	14				
PENTAD	11	13				
D1S1656	16	16				

4. Conclusion: The STR results of **M03.13** cells are consistent with the genotypes of **M03.13** cell lines in **EXPASY** database, the cell ID corresponded to **CVCL D357** , and the STR results **basically matched**. In the test, **Multi allele was found** in this cell line.

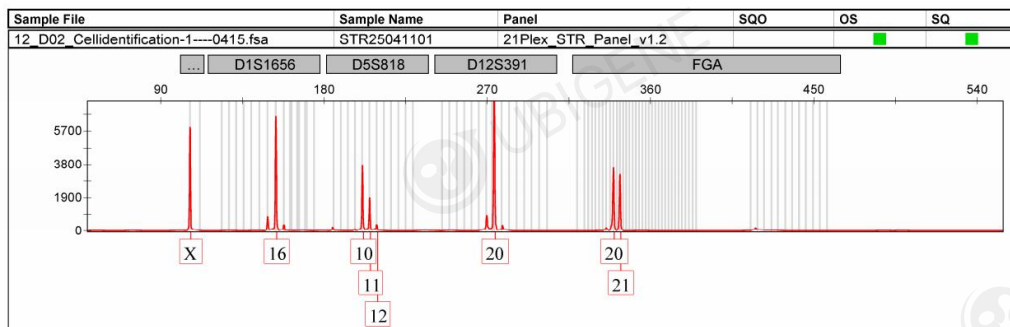
5. Attached Image



AB Applied Biosystems

20250414ren

GeneMapper ID v3.2



Tue Apr 15, 2025 01:17PM, PDT

Printed by: gmid

Page 2 of 2